

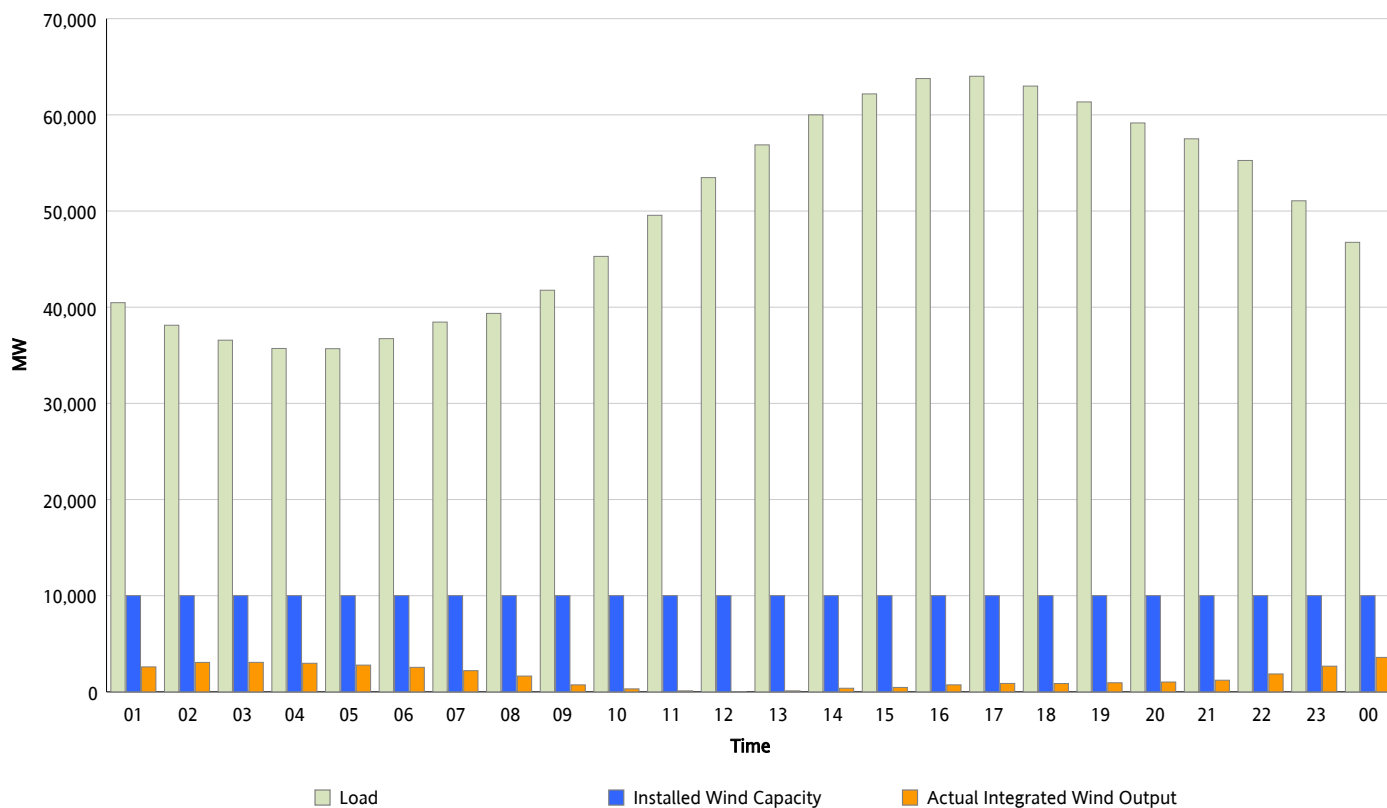


ERCOT Grid Operations

Wind Integration Report : 08/06/2012

Peak Load	64,013 MW
Load Peak Hour (HE)	17
Wind Over Peak	877 MW
Wind Record 06/19/12	8,368 MW
Max Wind Value*	3,906 MW
Wind Peak Time	23:59
Wind Integration %	8.72 %

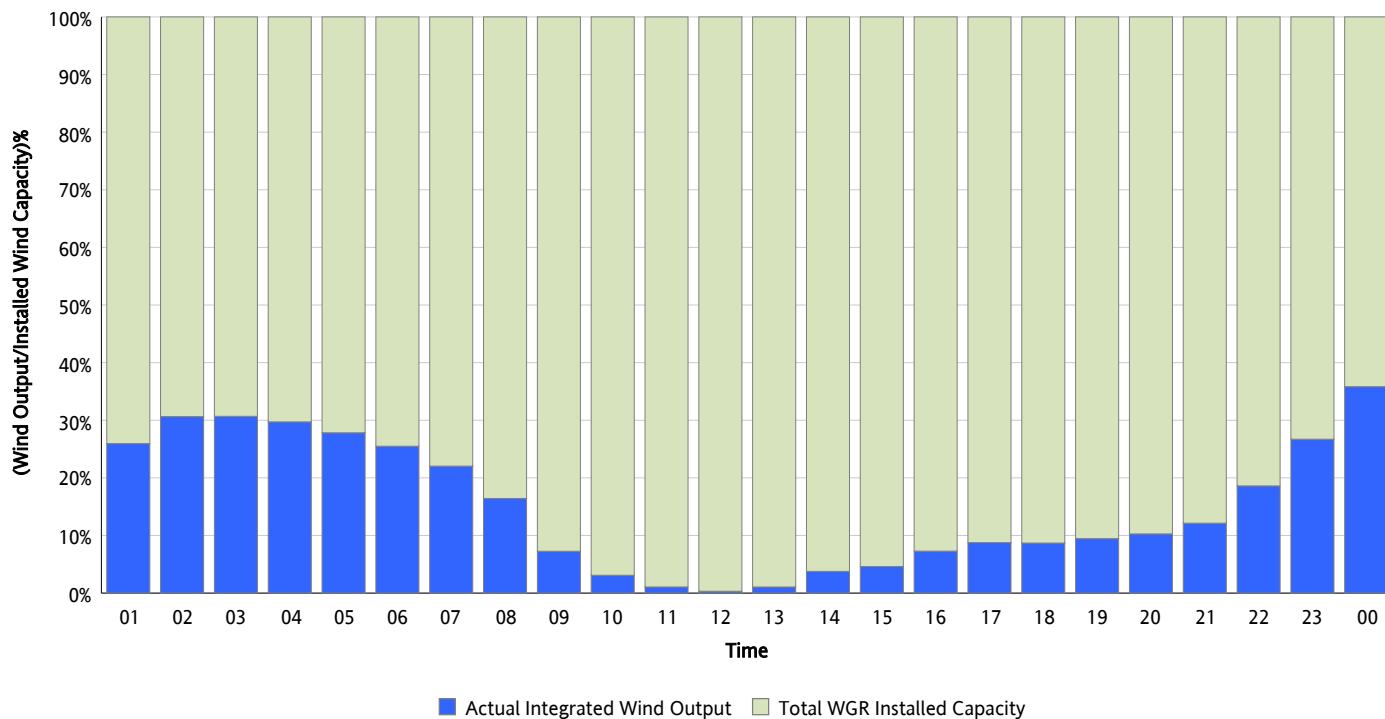
Hourly Average Actual Load vs. Actual Wind Output
08/06/2012



* Wind Record and Wind Max represent instantaneous values and the rest of the values are integrated over the hour

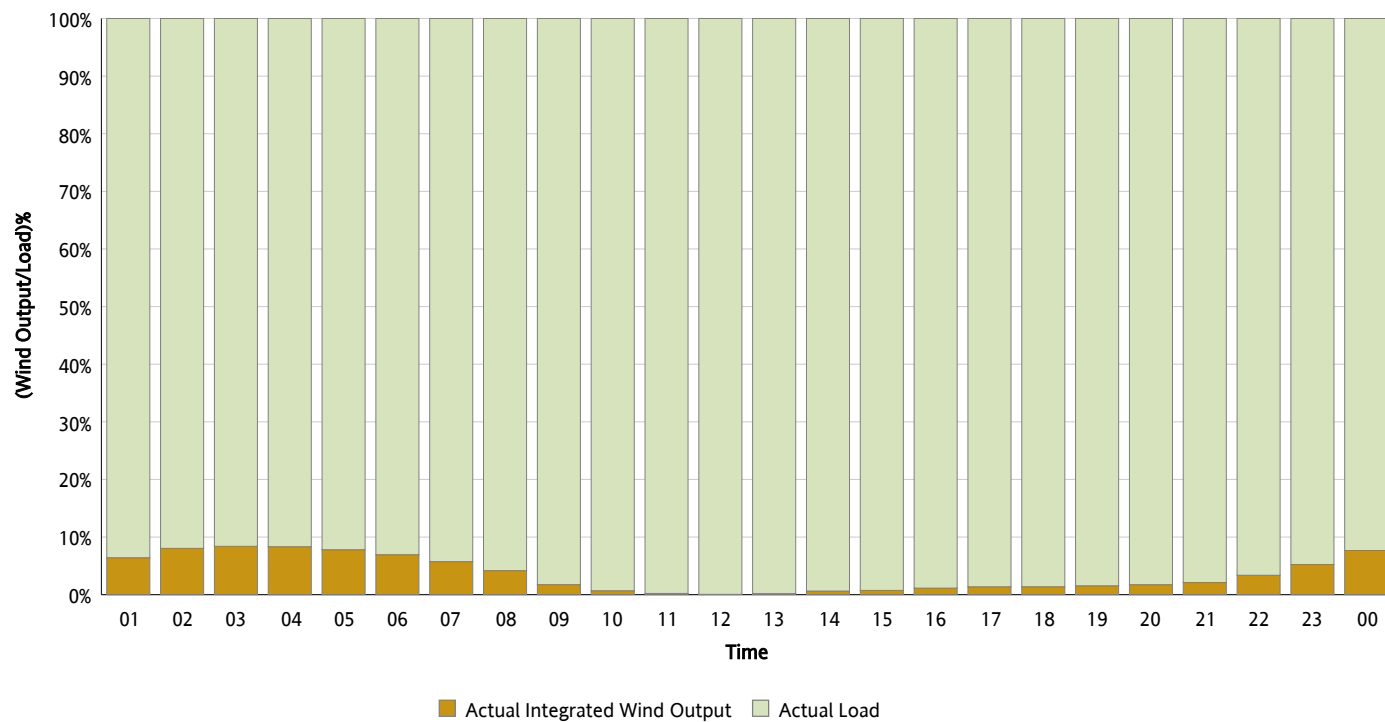
Actual Wind Output as a Percentage of the Total Installed Wind Capacity

08/06/2012



Actual Wind Output as a Percentage of the ERCOT Load

08/06/2012



ERCOT Load vs. Actual Wind Output

07/30/2012 - 08/06/2012

